

Transducer controlled shut off

- 340 - 3.400 Nm**
- MAX SPEED 10 RPM**
- SERVO MOTOR**
- DATA LOGGING**
- TORQUE + ANGLE FUNCTION**
- BATCH MODE**
OPTION

SPECIFICATIONS

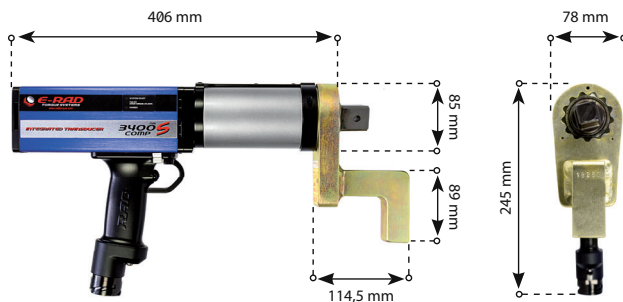
- **TORQUE RANGE:** 340 - 3.400 Nm
- **SPEED:** 10 RPM
- **WEIGHT:** 10,8 Kg with battery, excluding reaction arm and impact socket
- **SQUARE DRIVE:** 1 inch square drive
- **NOISE LEVEL:** Maximum 75 dB
- **PASSWORD PROTECTION:** Three user levels
- **LED INDICATOR LIGHTS:** Pass/Fail
- **CUSTOM PROGRAMMABLE**
- **REPEATABILITY ON SAME JOINT*:** +/- 2%.

* Test results from certified calibration lab

SUITABLE REACTION ARMS

Standard	Deep socket	Double ended
PN: 20120	PN: 18251	PN: 10516
Blank	Double ended blank	Safety sliding
PN: 10513	PN: 10448	PN: 23472

DIMENSIONS IN MM



TOOL KIT INCLUDING

- E-RAD BLU 3400-S
- Standard reaction arm (PN: 20120)
- Two retaining rings (PN: 10509)
- Control box 220V
- Controller cable 4,5 mtr
- Data logging software
- Calibration certificate
- Usermanual
- Safety instructions on USB stick
- Weatherproof storage case.



IMPERIAL VERSION

- **MODEL:** E-RAD BLU 3000-S
- **PART NUMBER:** N/A
- **TORQUE RANGE:** 250 - 2500 ft/lbs
- **WEIGHT:** 23.8 lbs.

Swivelling tool handle & hanger

Product number	Suitable for
19827	E-RAD BLU 950
19825	E-RAD BLU 2000
19823	E-RAD BLU 3400
19821	E-RAD BLU 4000
19819	E-RAD BLU 8000
22931	E-RAD BLU 10K
26634	E-RAD BLU 15K

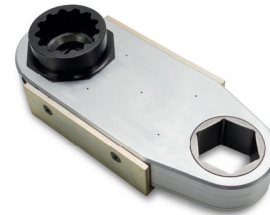


CX Offset Gearboxes

Product number	Gearbox
27978	Hex 50 mm
28540	Hex 65 mm

Product number	Suitable for	Gearbox
16155	E-RAD BLU 950(-S)	27978
26994	E-RAD BLU 2000	27978
13034	E-RAD BLU 3400(-S)	27978
28532	E-RAD BLU 3400(-S)	28540

Hex reducer on request.



Impact Sockets

Product number	Hex size	Square drive	Bolt size	Suitable for
200189	22MM	3/4"	M14	E-RAD BLU 950
200190	24MM	3/4"	M16	E-RAD BLU 950
200210	27MM	3/4"	M18	E-RAD BLU 950
200211	30MM	3/4"	M20	E-RAD BLU 950
200212	32MM	3/4"	M22	E-RAD BLU 950
200004	36MM	3/4"	M24	E-RAD BLU 950
200215	38MM	3/4"	M24	E-RAD BLU 950
200005	41MM	3/4"	M27	E-RAD BLU 950
200227	36MM	1"	M24	E-RAD BLU 2000, 3400 & 4000
200229	41MM	1"	M27	E-RAD BLU 2000, 3400 & 4000
200230	46MM	1"	M30	E-RAD BLU 2000, 3400 & 4000
200007	50MM	1"	M33	E-RAD BLU 2000, 3400 & 4000
200008	55MM	1"	M36	E-RAD BLU 2000, 3400 & 4000
200009	60MM	1"	M39	E-RAD BLU 3400 & 4000
200238	55MM	1,5"	M36	E-RAD BLU 8000
200297	60MM	1,5"	M39	E-RAD BLU 8000 & 10K
300052	70MM	1,5"	M45	E-RAD BLU 8000, 10K & 15K
200197	75MM	1,5"	M48	E-RAD BLU 8000, 10K & 15K
200241	80MM	1,5"	M49	E-RAD BLU 8000, 10K & 15K
200298	90MM	1,5"	M52	E-RAD BLU 10K & 15K



Nose extension series

Product number	Model	Length
14195	E-RAD BLU 950(-S)	324 mm
14200	E-RAD BLU 950(-S)	400 mm
14205	E-RAD BLU 950(-S)	476 mm
18185	E-RAD BLU 2000	349 mm
19058	E-RAD BLU 2000	400 mm
19059	E-RAD BLU 2000	476 mm
12096	E-RAD BLU 3400(-S)	330 mm
12061	E-RAD BLU 3400(-S)	406 mm
12097	E-RAD BLU 3400(-S)	470 mm
11750	E-RAD BLU 4000(-S)	318 mm
11751	E-RAD BLU 4000(-S)	394 mm
11752	E-RAD BLU 4000(-S)	470 mm



E-RAD Two Handed Safety Switch

Product number	Model
28795	E-RAD 4000, 8000, 10K & 15K(-S)
28797	E-RAD 950, 2000, & 3400(-S)



Trigger guard for E-RAD

Product number	Model
21889	E-RAD safety trigger guard

