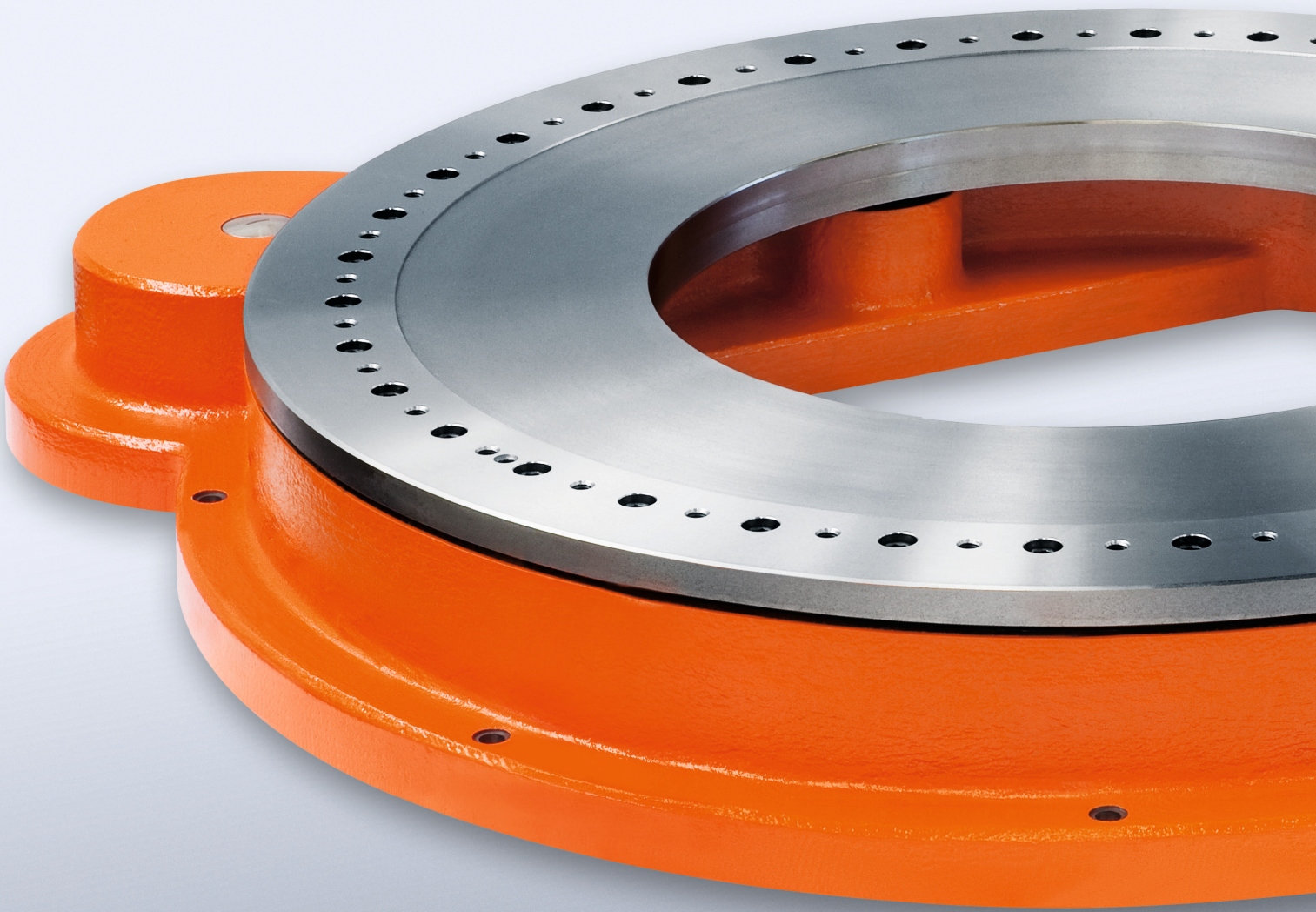
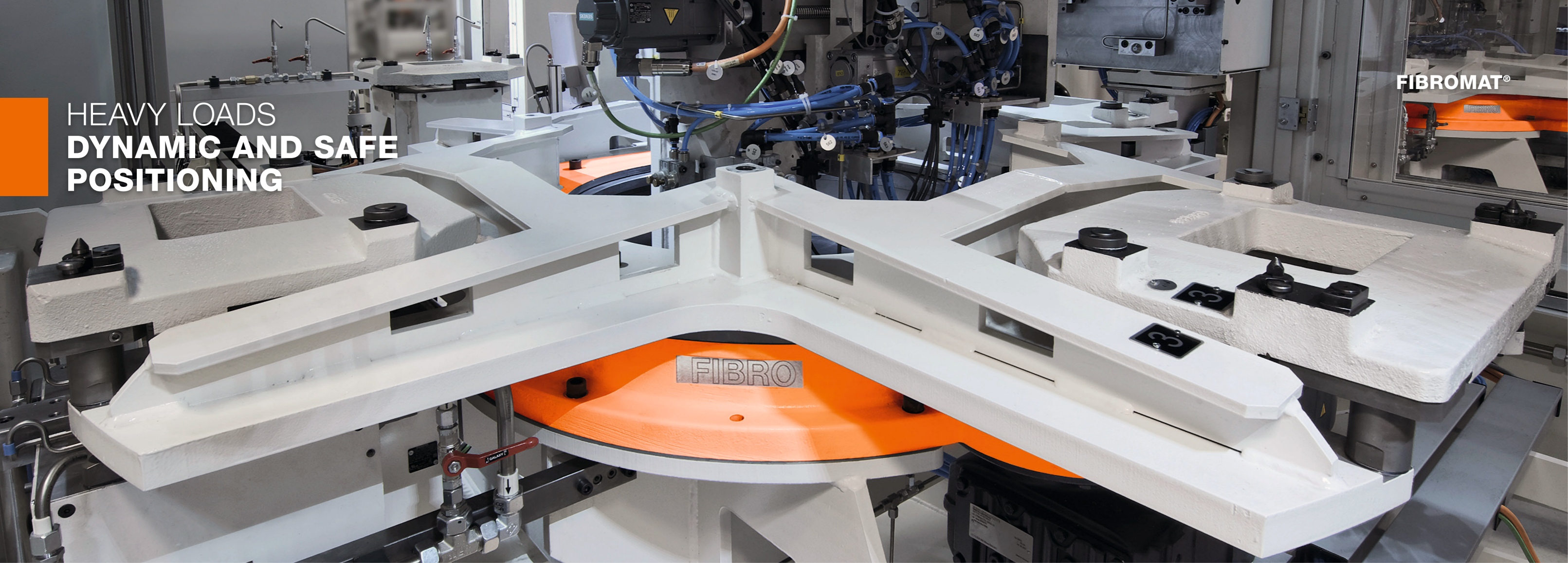


HEAVY-LOAD POSITIONING TABLES
FIBROMAT®



HEAVY LOADS DYNAMIC AND SAFE POSITIONING



A POWERHOUSE WITH AN EXTREMELY LARGE CENTRE HOLE AND A VERY FLAT DESIGN AT AN EXCELLENT PRICE – THE LATEST HEAVY-LOAD POSITIONING TABLE BY FIBRO.

When large and heavy fixtures have to be positioned dynamically and precisely, the FIBROMAT® modular heavy-load positioning table is the ideal solution. It fits perfectly into an automobile body in white, as the heart of workpiece storages or in honing centres, for example.

The maintenance-free rotary table with lifetime lubrication is driven by reliable spur gear toothings. This prevents damage to the mechanical system of the rotary table in the event of a sudden power failure or emergency stop. Its covered seals make it one of the most economical and robust rotary tables on the market. Place your trust in FIBRO's 50 years of experience in the construction of rotary tables! Our extensive engineering expertise and our own in-house manufacturing department allows us to implement your requests individually and immediately.

FIBROMAT® is available in four sizes for superstructures up to a maximum of 9,500 mm in diameter. Any position can be approached using the single drive, and by using an optional indexing unit, an accuracy up to ±15 arc seconds is obtained.

Extremely short emergency stopping times and a higher torque are achieved using two drives that have been clamped without play. On top of that, positioning accuracies up to ±10 arc seconds can be achieved using a direct measuring system.



FIBROMAT® AT.1250
with machine stand

Sizes		AT.0800	AT.1000	AT.1250	AT.1600
Table top diameter	mm	800	1,000	1,250	1,600
Centre hole diameter	mm	320	520	770	1,000
Maximum superstructure diameter	mm	4,500	6,000	7,500	9,500
Maximum transport load	kg	10,000	12,000	15,000	25,000
Permitted moment of inertia	kgm ²	8,000	16,000	35,000	100,000
Permitted axial loading on the indexing table	N	141,000	155,000	172,000	260,000
Permitted radial loading on the indexing table	N	56,000	64,000	80,000	220,000
Permitted tilting moment on the indexing table	Nm	35,000	50,000	72,000	135,000
Permitted tangential moment on the indexing table	Nm	6,500	9,400	12,900	16,300
Maximum axial runout of the table top	mm	0.05	0.05	0.07	0.10
Maximum runout of the centre borehole	mm	0.05	0.05	0.07	0.10
Weight (without drive unit)	kg	350	470	635	1,400

Additional options for FIBROMAT®

Second drive for higher positioning accuracy and higher torque

Indexing unit for increased positioning accuracy up to ±15" for freely selectable angles

Direct measuring system for highest positioning accuracy up to ±10"

Expandable centre hole

Measuring tape at table top for optical position analysis

Position detection and overrun protection

Media distributor and slip-ring transmitter

Machine stand and adaptations, e.g. for the exchange of existing rotary tables

Special connecting dimensions and customer-specific drilling templates for your individual use

FIBRO GMBH

THE LÄPPLE GROUP

Business Area Rotary Tables
Weidachstraße 41-43
74189 Weinsberg
GERMANY
T +49 7134 73-0
info@fibro.de
www.fibro.com

LÄPPLE AUTOMOTIVE
FIBRO
FIBRO LÄPPLE TECHNOLOGY
LÄPPLE AUS- UND WEITERBILDUNG

BRANCH OFFICES

FIBRO FRANCE SARL

26 Avenue de l'Europe
67300 Schiltigheim
FRANCE
T +33 390 204040
info@fibro.fr
www.fibro.com

FIBRO INC.

139 Harrison Avenue
Rockford, IL 61104
USA
T +1 815 2291300
info@fibroinc.com
www.fibro.com

FIBRO ASIA PTE. LTD.

9 Changi South Street 3, #07-04
Singapore 486361
SINGAPORE
T +65 65 439963
info@fibro-asia.com
www.fibro.com

FIBRO INDIA**PRECISION PRODUCTS PVT. LTD.**

Plot No: A-55, Phase II, Chakan Midc,
Taluka Khed, Pune - 410 501
INDIA
T +91 2135 33 88 00
info@fibro-india.com
www.fibro.com

FIBRO**PRECISION PRODUCTS CO., LTD.**

1st Floor, Building 3, No. 253, Ai Du Road
Pilot Free Trade Zone, Shanghai 200131
SHANGHAI
T +86 21 60 83 15 96
info@fibro.cn
www.fibro.com