

Professional Marking System **JEIL MTECH**

*Marksman*



- | CNC DOT PEEN MARKING MACHINE
- | MACHINE & MOTION CONTROLLER
- | FIBER & CO2 LASER MARKING MACHINE

[www.pinmarking.com](http://www.pinmarking.com)







The brand name "Marksman" of JEIL MTECH CO.,LTD has been engaged in manufacturing industrial dot peen and laser marking systems in Korea since 1989. We are constantly researching and developing innovative and reliable systems to satisfy our customer's needs. We provide you all solution for marking with our own manufactured machine and devices based on long-term skill.

JEIL MTECH has an abundance of experience in Custom designing marking systems to fit customer application.

As a result, we have more than 60% market share in Korea and we are now expanding oversea market through 18 countries business partner to all over the world.

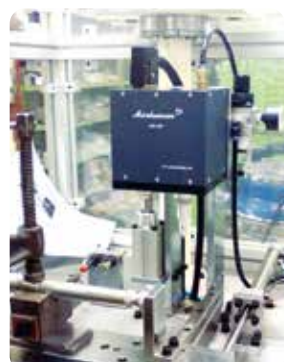
Many of big enterprises such as Hyundai, Kia, GM, Volvo, Honda, Suzuki, Ford, Daimler etc. have been using our dot peen marking systems in their plant and still being installed to their factories now.

All products of JEIL MTECH is certified by ISO 9001, ISO 14001. All our products meet the European CE standard and hold many of international patent and certificates. It is our goal to become the leader in marking field through persistent research and development of new products.

Thank you for choosing our Marksman products.



## Company Profile



*Marksman*®



## Oversea sales network

### 1. ASIA

China : Tianjin  
India : Deli, Pune and Chennai  
Iran : Tehran  
Japan : Kyoto  
Singapore : Singapore  
Taiwan : Taichung, Hsinzu and Kaoshung  
Thailand : Bangkok  
Vietnam : Hanoi & Hochiminh

### 2. North America

USA : Buffalo, NY  
Canada : Ontario

### 3. South America

Brazil : Sao Bernardo

### 4. Europe

Denmark : Vejle  
Germany : Wumlingen  
Spain : Barcelona  
Russia : Moscow  
Poland : Lipowa

Do not hesitate and contact me if your company want to become our business partner. Always welcome.

[www.pinmarking.com/eng](http://www.pinmarking.com/eng)  
[www.pinmarking.com/eng/mobile](http://www.pinmarking.com/eng/mobile)  
[isaac@pinmarking.com](mailto:isaac@pinmarking.com)  
[lji@pinmarking.com](mailto:lji@pinmarking.com)

Tel : +82-31-776-0803~6( Ext. 105)  
Fax : +82-31-776-0807  
Dir no. : +82-70-7018-4452



# Dot peen Marking Machine

# Dot peen Marking Head

MKP-054 Battery operated Portable (Hand-Held) marking machine



The MKP-054 is battery operated portable marking capability with Blue tooth connectivity.

MKP-054 marking machine is ideal for large fabrications and bulky, heavy and stationary parts on pallets. It supports linear, angler and cylindrical surfaces and 2D Data Matrix marking.

You can even edit your information and send it wirelessly to the marking head in seconds via Bluetooth and verify your variable data and setting on the built-in LCD.

Any material can be marked from plastic and hardened steel upto HRC 62.

No electric and pneumatic cable need the marking process.

Possible to do 40mins continuous marking without recharging by 2.0Ah battery standard.

■ Specification

ITEM	MKP-054	MKP-1340
Model		
Dimension	158(W) X 150(L) X 340 or 155(H)mm	218(W) X 120(L) X 155 or 230(H)mm
Marking area	64mm(X) x 32mm(Y)	120mm(X) x 35mm(Y)
Jig size	145 X 115 X 320mm	220 X 117 X 190mm
Available cha. height	From 1.0mm to depends on marking area	
Font	Standard 1 & 2. Dot font (Size 5x7) Available any window font with JS-2100 S/W and JS-2200	
Marking Pin	Electromagnetic marking pin	
Stroke of Pin	Upto Max. 5mm (Constant marking depth)	
Available Cha.	Figure, Capital letters, Lower case, Special cha.	
Battery	Bosch Lithium Ion Battery	

Section	Dot peen marking head			
				
Model	MK-115	MH-130	MK-100BS	MH-80
Marking Area	115 x 100mm	130 x 100mm	98 x 100mm	90 x 75mm
Weight	11kg	9kg	9kg	8kg
Dimension with connectors	230 x 210 x 176mm	248 x 250 x 218mm	232 x 206 x 169mm	230 x 230 x 210mm
Motor	Stepping motor	Stepping motor	Stepping motor	Stepping motor
Compatible controller	LM Guide	Linear Guide	Ball Screw	Linear Guide
Marking speed	3Cha. per a sec.	3Cha. per a sec.	3Cha. per a sec.	3Cha. per a sec.

Section	Dot peen marking head	Hand-held dot peen marking head		Scribing head
				
Model	MK-85BS	MK-054	MK-1340	SI-85
Marking Area	80 x 50 mm	48 x 40mm	120 x 38mm	80 x 50mm
Weight	6kg	2.8kg	3.7kg	7.8kg
Dimension with connectors	203 x 158 x 193mm	133 x 120 x 144mm/209mm [Jig]	218 x 120 x 144mm/209mm[Jig]	220 x 158 x 175mm
Motor	Stepping motor	Stepping motor	Stepping motor	Stepping motor
Compatible controller	Ball Screw, Linear Guide	Linear, LM Guide	Linear, LM Guide	Ball Screw, LM Guide
Marking speed	3Cha. per a sec.	3Cha. per a sec.	3Cha. per a sec.	1Cha. per a sec.



# Dot peen Marking Head



## MK-054, MK-1340 Hand-Held (portable) Dot Peen Marking Head

The MK-054 and MK-1340 are Hand-Held (Portable) dot peen marking machine which is connected to the any of controller by a robotic cable.

These are portable units which is ideal for the marking to huge, large, bulky parts.

It can be used for all types of materials ranging from plastic to steel. It marks on linear, angler and cylindrical surfaces and 2D Data Matrix marking.

And customer can choose the type of marking machine among pneumatic or electronic depending on their purpose.

### ■ Features

- Able to make custom made jig for customer application.
- Easy to install a narrow space.
- A Light weight marking head.
- Can be used as portable marking head or stand alone marking head.

### ■ MK-054 Specification

Model	MH-054
Dimension with connectors	131 mm (W) X 120 mm (L) X 209 or 144 mm (H)
Marking area	48 mm (X) X 40 mm (Y)
Connector	24pin connector
App. Air pressure	2 ~ 3 Bar
Weight	2.8 KG
Moving guide for X and Y axis	Iron (Bearing guide)
Motor	Stepping motor
Material of case	Steel

### ■ MK-1340 Specification

Model	MH-1340
Dimension with connectors	218 mm (W) X 120 mm (L) X 209 or 144 mm (H)
Marking area	120 mm (X) X 38 mm (Y)
Connector	24pin connector
App. Air pressure	2 ~ 3 Bar
Weight	3.5 KG
Moving guide for X and Y axis	Iron (Bearing guide)
Motor	Stepping motor
Material of case	Steel



## A CNC Dot Pin Marking Machine Head(Model: MH-115)

Dot peen machines are capable of being integrated systems for production lines. These marking pins of systems are dedicated for integrators, who appreciate their compact design, reliability and speed of marking. These MK-115 machine are compact and was designed to be easily integrated on automated lines in whatever position you choose.

It is easy to use and is suitable to mark parts of various shapes, irregular surfaces and materials.

The internal components are protected by a cast aluminium and sliding bellows allowing continuous industrial use. It allows quick dot peen marking on all types of materials, from plastic to hardest steel (up to 65Hrc).

### ■ Specification

- Marking area: 115X100 mm
- Dimensions with connectors: 23cm(width) X 21cm(Length) X 18cm(Height)
- Weight: 8 KG
- Material of case: CAST ALUMINUM
- Move guide for X and Y-axis: LM Guide
- Air pressure: Min 2 Bar to Max 5 Bar
- Motor: STEPPING MOTOR
- Control Unit: All available controllers
- 24 pins for connect with MCU
- Mac valve
- X & Y timing belts

### ■ Features

- A Sound Proof Cap for reduce noise (Only PH-Pin)
- A variable and easy installing to customer(s) own systems
- Able to use LP and PH pins
- Fast marking ( 5 3mm cha. per a second)
- A customer OEM installation or with T-300 table



## MH-80 Marking Head

The function and quality is MH-80 is almost same as MH-115.

Only different is a case made by steel and guideline. Therefore, it's light and easy to installation. The moving guide made by iron and X, Y-axis has a rollers(Bearing) inside for smooth and long lifetime of moving.



Model	MH-80
Dimension with connectors	218 mm230 mm (W) X 230 mm (L) X 210 mm (H)
Marking area	90 mm (X) X 75 mm (Y)
Connector	24pin connector
App. Air pressure	2 ~ 3 Bar
Weight	8 KG
Moving guide for X and Y axis	Iron (Bearing guide)
Motor	Stepping motor
Material of case	Steel

### ■ Features

- A Competitive price with good quality
- A Dust Cover; protect dust from bad environmental
- A Sound Proof Cap for reduce noise (Only PH-Pin)
- A variable and easy installing to customer(s) own systems
- Able to use LP and PH pins
- Do not need a power cable
- A customer OEM installation or with T-300 table



# Scribing Marking Head

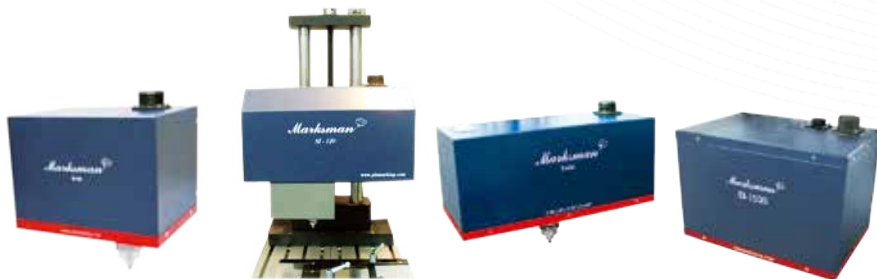
# Main Control Unit

## A CNC Dot Pin Marking Machine Head(Model: SI-Series)

The Scribing head, SI-series, are able to scribing marking through SI-03 pin. This Marking head is suitable for the marking which need noiseless marking. Possible to mark for precise marking like 1mm character marking and 2D/QR code marking. SI-Series head are good for Chassis marking of the car and Vehicle.

### ■ Features

- A Competitive price with good quality
- A Dust Cover; protect from the dust and foreign material from bad environment
- Possible to do noiseless marking
- A variable and easy installing to customer(s) own systems
- Able to use SI-03 pin and PH pins
- A customer OEM installation or with T-300H table



### ■ Specification

	SI-85	SI-120	SI-230	SI-150 Servo Super fast
Marking area	80 x 50mm	90 x 80mm	230 x 50mm	150x70mm
Dimensions with connector	220x165x175mm	280x230x160mm	370x158x175mm	295x200x197mm
Weight	8kg	15kg	17kg	
Dust cover	Steel cover	Bellow cover	Steel cover	Steel cover
Case	Steel case			
Compatible pin	SI-03 pin only			
Compatible controller	Recommended MCU-100N controller for deep scribing marking			

### ■ Sample



## CNC Dot Pin Marking Machine Control Unit(Model:MCU-200BN)



The MCU-200BN is our latest controller of which size is more compact than MCU-100N with a larger viewing window. MCU-200BN is the latest products which is able to be communicated with Integration system by I/O, RS-232 and Ethernet. The compact size of MCU200BN makes this system fit perfectly on your system. We have provided this MCU-200BN controller to Hyundai and Kia motors more than 1,000 sets in their factories since 1998 by high-end performance and stability

### ■ Specification

- Dimensions with connectors: 290mm(w)X140mm(L)X90mm(H)
- Electric:FreeVoltage (85V~264V,50/60 Hz)
- Weight: 3.5 KG
- Material of case: Steel
- External switch
- RS-232 serial port
- Ethernet Port
- PLC I/O Interface
- Radiant of heats
- Marking Speed (in case of PH system)  
2mm height = 4 ~ 5 / Second  
3mm height = 2 ~ 3 / Second

### ■ Features

- Most important function of MCU-200BN is able to be operated as a stand alone unit or integration system by I/O, RS-232 cable and Ethernet port
- No Air Cooling system inside of the MCU
- Linear, circular, oblique-line, angle, logo and Cylinder marking, Hexagon marking (with CDC-20)
- Automatic serialization, date coding, Julian calendar special date coding, day & night coding, UID marking, Shift code, Weekcode
- Embedded three kind of standard fonts (Std1, Std2,STD3, Dot)
- 2D Data-matrix , QR code marking
- Use SD card and USB for more convenience to backup & load big data
- Able to communicate by I/O, RS-232 and Ethernet
- 3 kind of languages menu are supported. (English, German and Italian)



# Stand Alone Marking Machine

Marksman

## A CNC Dot Pin-Marking Machine (Model: MK-300L)

Strong functions and competitive price of stand alone marking machine MK-300L. The "MK-300L" is the most economical model among Jeil Mtech product's. It has to be connected with PC for marking and be able to do a marking through Jeil Mtech own software "JS-2000". This MK-300L is proper to use to small and medium company or who want to use just simple marking. Also, compact size for small working space. The "MK-300L" can use with computer through RS-232 cable using JS-2000 software.



### ■ Specification

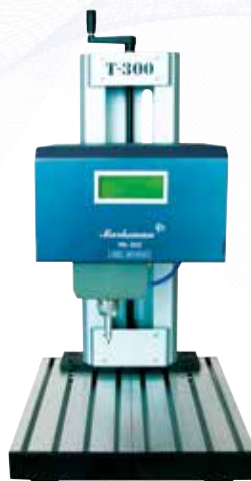
- Marking area: 90mm X 75mm
- Dimensions with table: 23cm(W) X 23cm(L) X 19cm(H)
- Weight: 9 Kg
- Material of case: STEEL
- Move guide: Iron Guide
- Electric: Select 115V or 230V, 50/60 Hz
- Air pressure: Min 2 Bar to Max 5 Bar
- Memory for PLC: 8,000 Byte
- RS-232 port
- Power cable

### ■ Features

- Most important function is this model only can be operated with PC through RS-232 cable using JS-2000S/W
- LP/PH Combined(Inside)
- Linear, circular, oblique-line and angle marking, 2D Data Matrix
- Automatic serialization, date coding, Julian calendar special date coding, day & night coding
- Embedded two kind of standard fonts
- Single block data, Auto CAD PLT file marking, special logo marking

## Stand alone marking machine : MK-300

Stand alone Dot peen marking machine "MK-300" are designed for small quantity and various kinds of marking. Tungsten carbide marking pin let you have permanent marking to many type of material from plastic to hardened steel up to 62 Hrc. The "MK-300" has built in controller inside of marking head as stand alone marking machine. It makes you have permanent marking on your parts without P.C. These type of marking (text, digits) are made of a succession of dots. MK-300 works with parts of various shapes and surface conditions (flat and irregular surfaces, concave, convex, circular, raw material etc...) Also, It has an external switch "Stop, Start and Reset" button for more convenience. All of these products are designed for user friendly.



### ■ Specification

- Marking area: 90mm X 75mm
- Dimensions with table: 23cm(W) X 23cm(L) X 19cm(H)
- Weight: 9 Kg
- Material of case: STEEL
- Move guide: Iron Guide
- Dust Cover Type
- Electric: Select 115V or 230V, 50/60 Hz
- Air pressure: Min 2 Bar to Max 5 Bar
- Able to save block data: 40cha/64 Blocks
- External switch port
- Mini Keyboard port
- RS-232 port
- Power cable

### ■ Features

- Operation without PC or with a PC through a RS-232 cable using JS-2100S/W
- Linear, circular, oblique-line and angle marking
- Automatic serialization, date coding, Julian calendar special date coding, day & night coding
- Embedded 2 kind of standard and Dot fonts
- Single block data, Auto CAD PLT file marking, special logo marking with JS-2100
- Includes : External Switch, Power cable, 86 Keyboard, Air-regulator, T-300, 1set of LP or PH pin

## CNC Dot Pin Marking Machine Control Unit(Model:MCU-300BN)

**MCU-300BN is the most economical compact size controller among Marksman products.**

LCD on the controller makes you input and modify the marking data easily by keyboard. While the MCU-300BN can be integrated with our new PC software named JS-2100 on the computer via RS-232 cable. It also has an external "Stop, Start and Reset" switch for customer convenience.

**MCU-300BN is able to support any language and all window font when MCU-300BN is connected with JS-2100.**

MCU-300BN can be worked with all marking head among Marksman products except for scribing head.



### ■ Specification

- Dimensions with connectors: 160mm(W) X 120mm(L) X 285mm(H)
- Electric: Free Voltage (85V~264V, 50/60 Hz)
- Weight: 2.5 KG
- Material of case: Steel
- External switch
- RS-232 serial port
- PLC, I/O Interface
- Radiant of heats
- 128 Graphic LCD Display
- Marking Speed (in case of PH system)  
2mm height = 4 ~ 5 / Second  
3mm height = 2 ~ 3 / Second

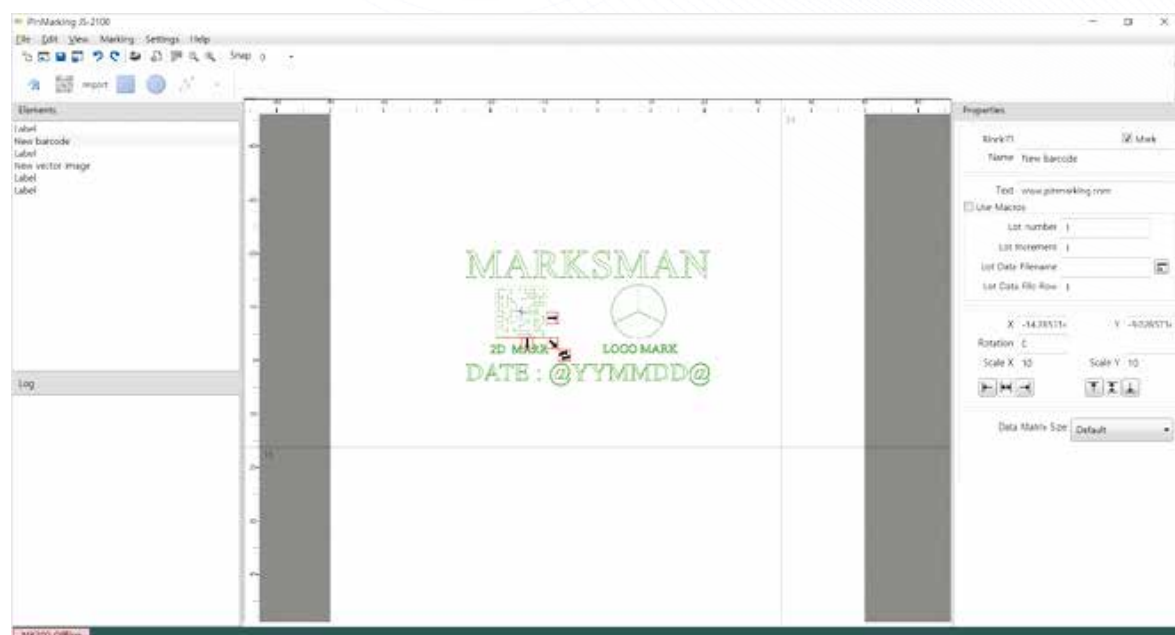
### ■ Features

- Super Fast! Up to 5 letters per second (2mm height)
- Easy Select to LP/PH System on S/W
- Linear, circular, angular and Cylinder marking(with CDC-20)
- Automatic serialization, date coding, Julian calendar special date coding, day & night coding, Shift code.
- Embedded 4 kind of standard fonts (Std1, Std2, Dot, User font)
- Auto CAD PLT file marking, and special logo marking
- 2D Data-matrix marking, Logo marking on JS-2100 S/W
- Able to communicate with RS-232 and PLC through I/O interface



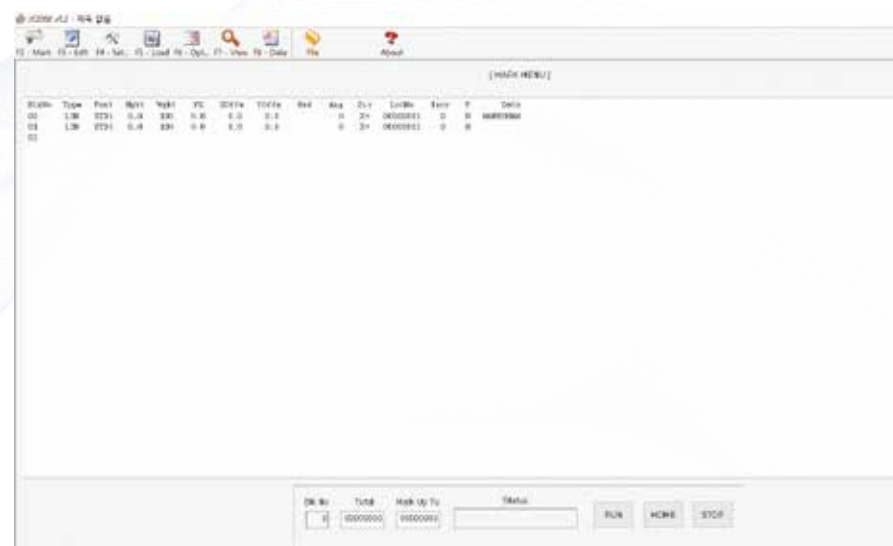
## JS-2100 User Interface for MK-300N, MCU-300BN

Using JS-2100 PC software, it is possible to create marking files directly on the PC and transfer them to the marking machine through Bluetooth or RS-232 connectivity.  
It is possible to visualize the created marking file by preview function on JS-2100 S/W through Bluetooth and RS-232 connectivity before the actual marking process.  
Possible to create simple logo and figure and import customer data base such as .xls.  
Possible to back-up and save the marking data to the P.C on JS-2100S/W,



## JS-1000 User interface for MCU-100N and MCU-200BN

JEIL MTECH's own software for MCU-200BN and MCU-100N for window program.




**Spec. of computer :**  
Window 7,8, 10

**Main function :**  
Preview,  
Data backup and  
Up & Down load data

## CNC DOT PIN MARKING MACHINE IMPACT PINS

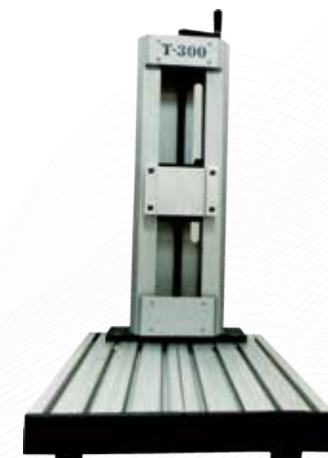
The impact pins for marking machines are made by Tungsten carbide.  
Those pins are made by different purpose.  
Pin stroke of LP pins is longer than PH-pin and good for the marking to irregular, curve and uneven surface.  
Marking speed of PH pin is faster than LP pins and it let the cycle time of marking decreased.  
The EP pin is electric marking pin which makes you not to use air-pressure for dot peen marking.  
SI-03, 03H pins are scribing marking pin which doesn't make any noisy during the marking.  
This SI pins are suitable for some work which is needed noiseless.  
Those Tungsten carbide pins can mark from plastic to HRC 62 strong hardness materials.

Section	High Speed pin -PH	High Stroke Pin - LP			
					
	Model	PH-16	LP-06	LP-10	LP-15
	Max. Pin stroke	4mm	8mm	15mm	15mm
	Gap from workpiece	3mm	6mm	8mm	8mm
Air pressure	4~5 Bar	2~2.5 Bar			

Section	Power LP pin	Electric pin	Scribing pin		
					
	Model	PLP-10	HLP-10	EP-03	SI-03
	Max. Pin stroke	15mm	15mm	5mm	4mm
	Gap from workpiece	8mm	8mm	3mm	3mm
Air pressure	4.0Bar	4.0 Bar		4.0Bar	

## Height adjustment table T-300 (Model : T-300 )

T-300 table is the column for dot peen marking head for the customer who want to have manual marking.  
Height adjustment can be adjusted upto 300mm.  
If you mark the task manually, this T-300 stand is the best device for passive operation.



### ■ Specification

Model	T-300 TABLE
Size	340 mm (W) X 300 mm (L) X 570 mm (H)
Adjustable height	300 mm (Z-Axis)
Weight	18.5 KG
Guide	Ball screw
Case material	Steel

- Easy to adjust the height upto 300mm
- Ruler that is marked to the side of column tell the height of marking head for customer convenience.
- Basement made by aluminium profile make you various shape jigs can be attached.



# Marking Machine Head



## Auto feeding name plate system AFS-2000

AFS-2000 is Auto-feeding name plate system which can mark the serial number on the plate automatically. This machine can be used automatically or manually by customer request.



- Specification
- Dimensions with connector

Weight

Case of materia

Compatible controller

Additional information
- Depending on customer application

Depending on the plate size.

Stainless steel

MCU-100N & MCU-200BN

- Double Air-regulator for auto feeding

- A four indicator LED light

- Start, Reset and feed switch

- Adjust screw

CDC Dot peen marking machine for pipe marking

## A CNC Dot Peen Marking Machine Cylinder Unit (Model: CDC-20M)

CDC-20M is the rotating machine which let you have a marking to the pipe, round bar and circle surfaces.  
CDC-20M can hold the workpiece by pneumatic or manually.  
CDC-20M is able to be made by OEM for customer application size.

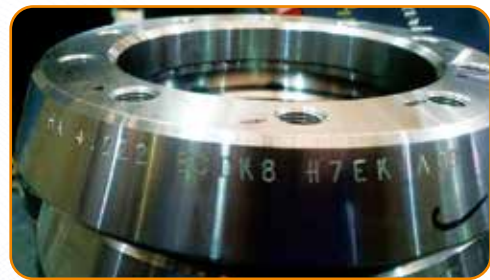
- Specification
- Dimensions with connector

Weight

Compatible controller
- Depending on customer request

Depending on customer work piece

MCU-100N and MCU-200BN



## High Performance Fiber Laser M/C

- Black Mamba Series
- Multi Focus
- JMSFL-U-20-RM-J

JMSFL-U-30-RM-J

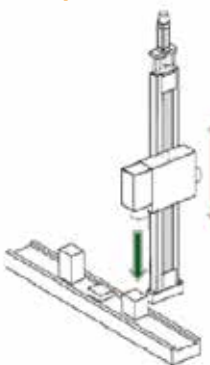
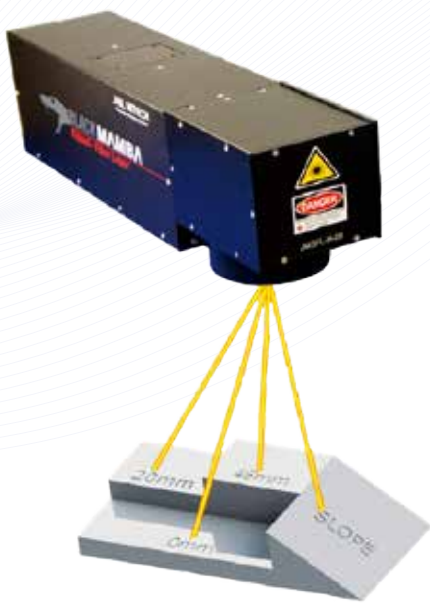
JMSFL-U-20-EP-J
- Multi Focus marking upto 48mm

Multi Focus marking upto 48mm

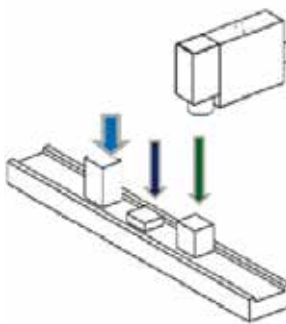
Multi Focus marking upto 48mm with various material such as PE, PP

Can mark to the parts that has clearance upto 48mm without height adjustment.

- Advantage for Multi focus function



Single focus system  
To mark different height of parts, separate Z axis system has to be integrated.

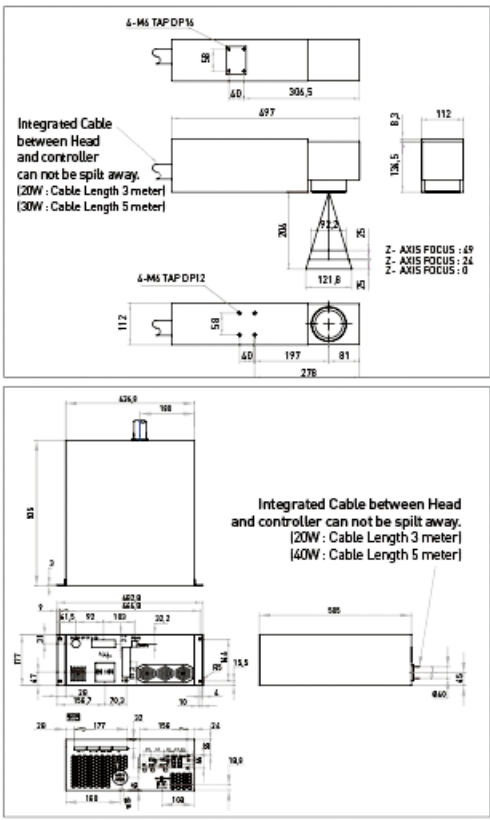


Multi Focus system  
Different height of parts can be marked upto 48mm without height adjustment.

- Specification

Model	JMSFL-U-20-RM-J	JMSFL-U-20-EP-J	JMSFL-U-40-HS-J	JMSFL-U-50-RM-J
Wave Length	1059-1065nm			
Polarization	Random			
Average Output Power	>20W		>40W	>70W
Energy per pulse	>1.0m J		>1.3m J	>1.0m J
Beam Quality(M <sup>2</sup> )	10-1.6		2.5-3.5	1.0-1.6
CM(Continuous) Mode	NO	YES	YES	NO
Max Power	>10Kw		>0Kw	>10Kw
Power supply	24±2VDC			
Effective marking distances. (Without Z-axis marking)	±1mm			
Effective marking distances. (Z-axis marking)	±24mm			
Operating Temp. range	0 to +45			
Keeping Purposes (When not in use)	Air cooled			
Cooling	Forced air			
I/O	USB / Relay			
Dimension of controller	427(W) x 505(L) x 177(H) mm			
Module size	347 x 201 x 95			
Weight	31kg			
Optional	Red Beam, marking on the fly. Safety glasses			
Cable Length	3M	5M	3M	
C-Type of scanner	Standard : 107 x 107mm / Working Distance : 182mm			
Marking Window	Optional : 160 x 160mm / Working Distance : 306mm			
	112 x 112mm / Working Distance : 190mm			

- Laser Layout







## High performance Fiber Laser Marker



[www.pinmarking.com/eng](http://www.pinmarking.com/eng)  
[www.pinmarking.com/eng/mobile](http://www.pinmarking.com/eng/mobile)

#909 SKn Technopark Mega-Center,  
 Sagimakgol-Ro 124, Joongwon-Gu,  
 Seongnam-Si, Gyeonggi-Do 13207, S.Korea

Tel : +82-31-776-0803~6 (Ext. 105)  
 Fax : +82-31-776-0807  
 Dir. no. : +82-70-7018-4452  
 E-mail : isaac@pinmarking.com  
 lji@pinmarking.com

[www.pinmarking.com](http://www.pinmarking.com)

Authorized business partner